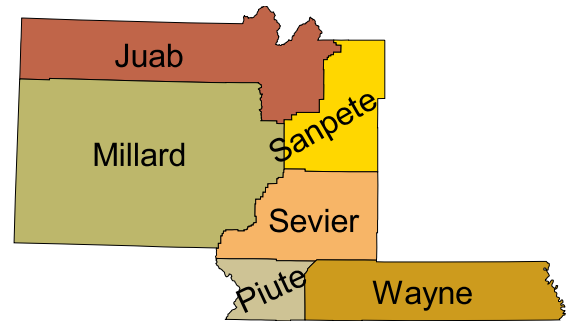
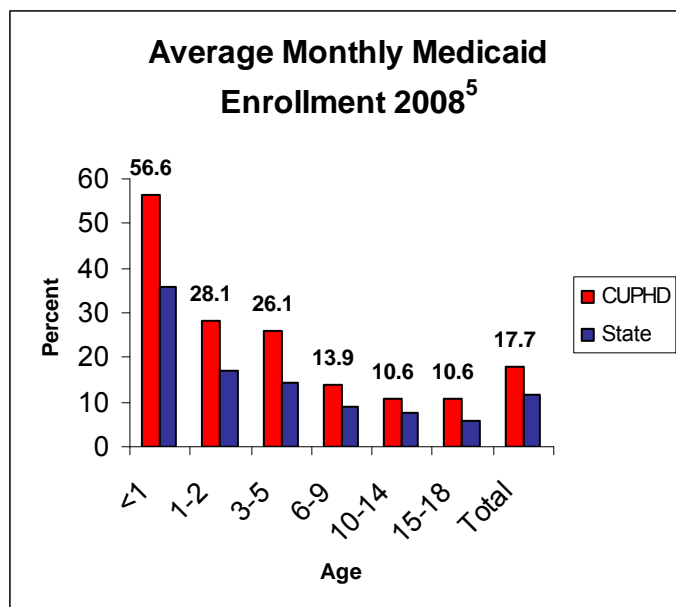


Population 2008 <sup>1</sup>	Number	% of Total
<b>Total Population</b>	<b>75,198</b>	
17 and Under	22,041	29.3%
18 to 34	21,528	28.6%
35 to 49	11,949	15.9%
50 to 64	11,100	14.8%
65 and Over	8,580	11.4%
Poverty 2007-2008 <sup>2</sup>	Estimated	% of Total
<b>Total 0-100% Poverty</b>	<b>10,800</b>	<b>14.4%</b>
17 and Under	4,200	19.1%
18 to 34	3,400	15.7%
35 to 49	1,400	12.1%
50 to 64	700	6.5%
65 and Over	1,100	12.9%
<b>Total 101-200% Poverty</b>	<b>22,300</b>	<b>29.7%</b>
17 and Under	7,100	32.3%
18 to 34	8,000	37.0%
35 to 49	2,700	23.0%
50 to 64	1,500	13.1%
65 and Over	2,800	33.2%



Population 2008 <sup>1</sup>	Number	% of Total
<b>Total 0-18</b>	<b>23,622</b>	
<1	1,187	5.0%
1-2	2,410	10.2%
3-5	3,532	15.0%
6-9	4,829	20.4%
10-14	6,130	26.0%
15-18	5,534	23.4%

Population 2008 <sup>1</sup>	Number	% of Total
Juab	9,926	13.2%
Millard	13,504	18.0%
Piute	1,397	1.9%
Sanpete	26,935	35.8%
Sevier	20,764	27.6%
Wayne	2,672	3.6%



Uninsured 2007-2008 <sup>3</sup>	Estimated #	% of Total
<b>Total Uninsured (0-64)</b>	<b>11,400</b>	<b>17.1%</b>
17 and Under	1,800	8.2%
18 to 34	5,200	24.3%
35 to 49	2,600	22.1%
50 to 64	1,700	15.7%

Selected Insurance Type 2008 <sup>4</sup>	Number	% of Total
Medicare	10,000	15.8%
CHIP*	1,900	9.9%

\*Children's Health Insurance Program, Ages 0 to 18

Medicaid data for Piute County not yet available.

For Reference Notes, please see page 89.

**CoCASA: Up-to-Date at Age Two by Antigen 2008<sup>6</sup>**

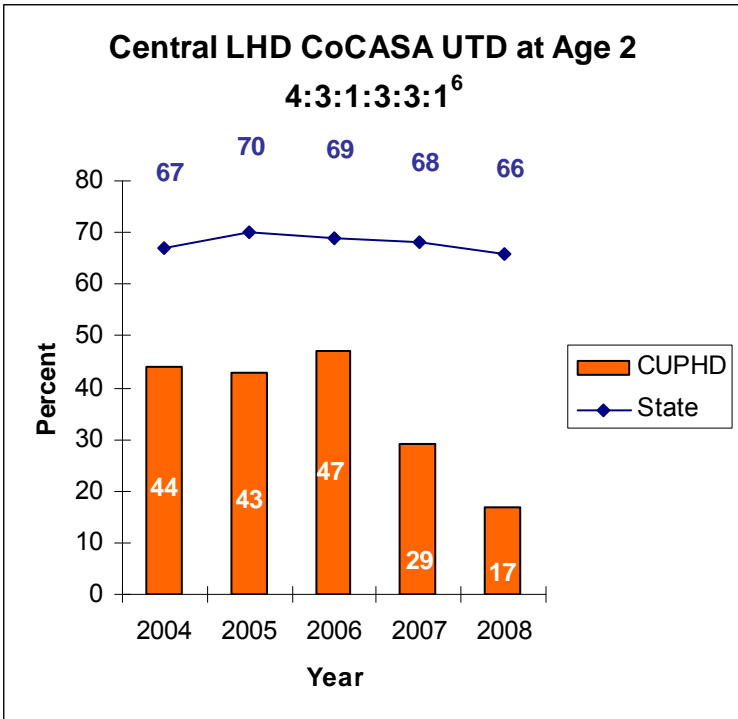
	4 DTaP	3 Polio	1 MMR	3 Hib	3 Hep B	1 Varicella	4:3:1:3:3:1	95% Confidence Interval
All Providers	42.9%	70.6%	65.6%	71.6%	68.4%	59.6%	32.2%	28.0%, 36.4%

**Up-to-Date at Age Two (4:3:1:3:3:1) 2008<sup>6</sup>**

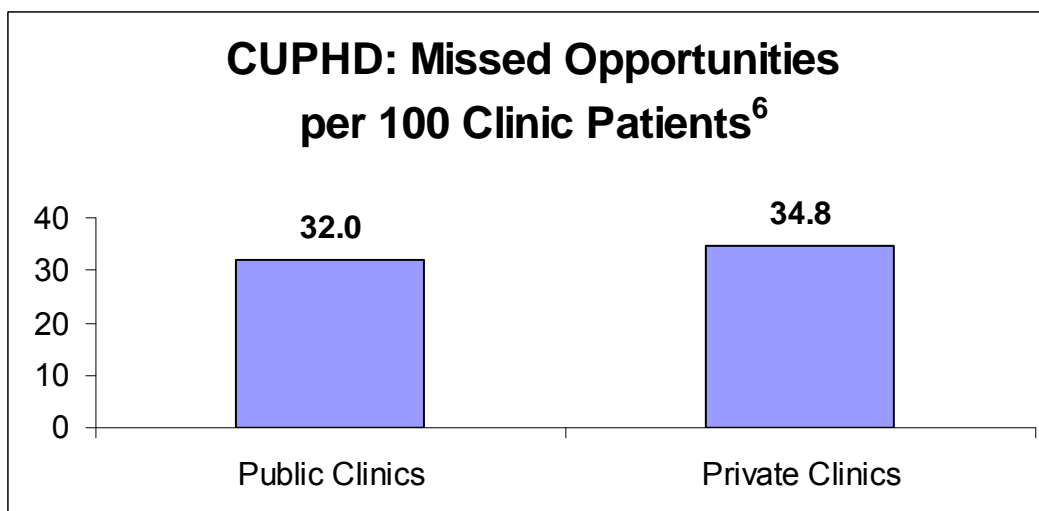
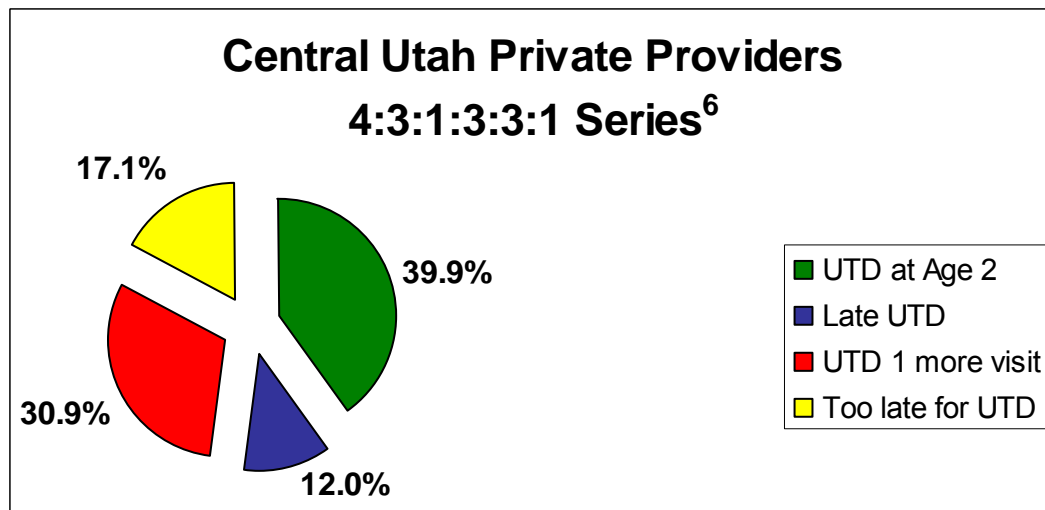
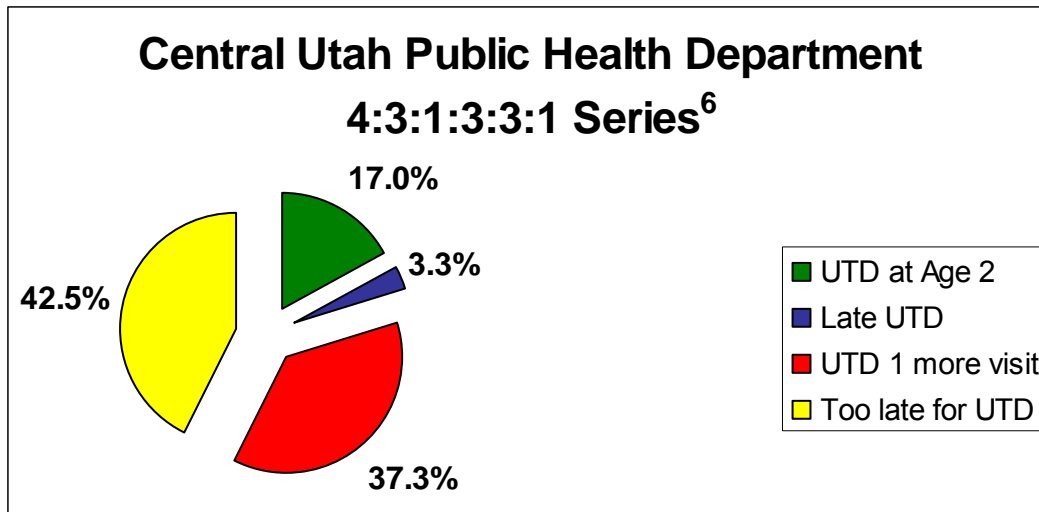
Provider Type	2008		2007
	Point Estimate	95% Confidence Interval	95% Confidence Interval
All VFC Private Providers	39.9%	34.4%, 45.4%	29.9%, 39.4%
FQHC/RHC	9.1%	1.6%, 37.7%	NA
Local Health Departments	17.0%	10.7%, 23.3%	17.3%, 39.9%

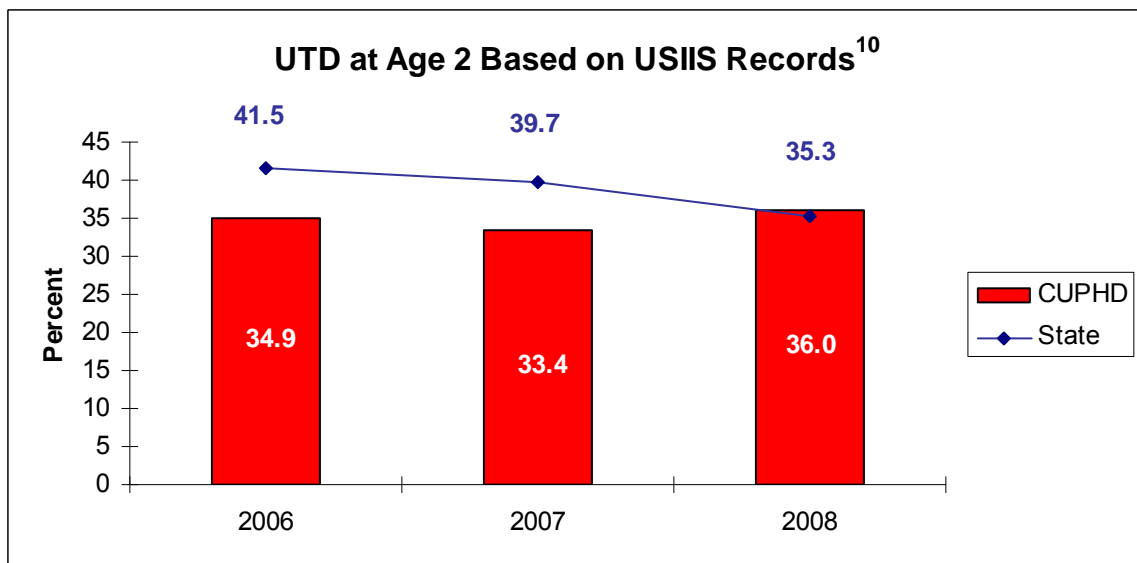
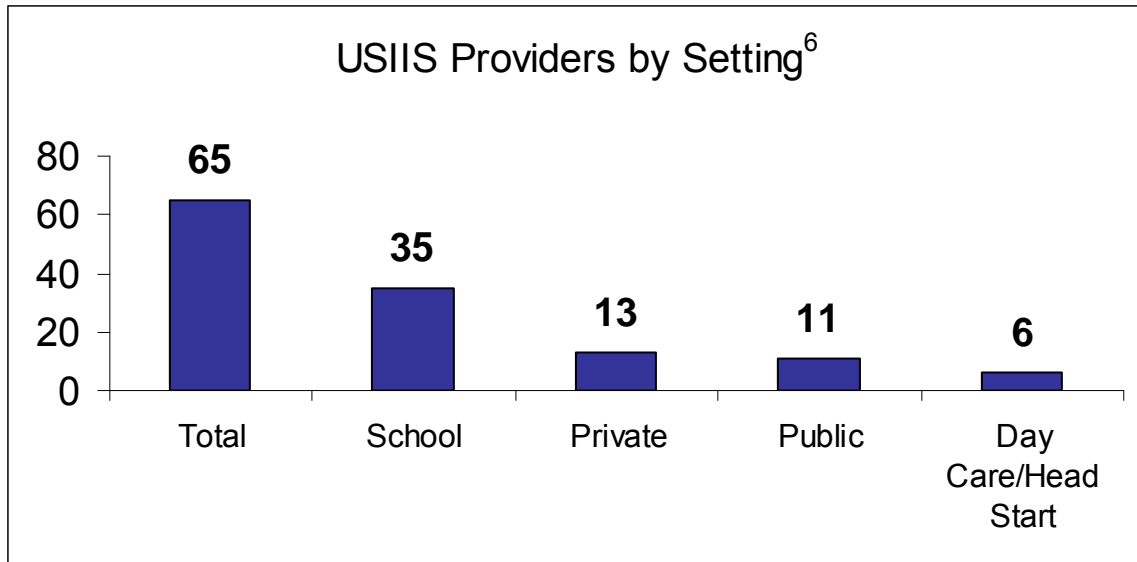
**Health Care 2008**

Providers/Facilities	Number
Private VFC Providers <sup>6</sup>	14
Public Medical Clinics <sup>6</sup>	2
Hospitals <sup>7,*</sup>	6
Long-term Care and Assisted Living Centers <sup>8</sup>	14
Local Health District Offices <sup>6</sup>	8



\*Central Valley Medical Center & Gunnison Hospital NOT offering birth dose Hepatitis B vaccine.

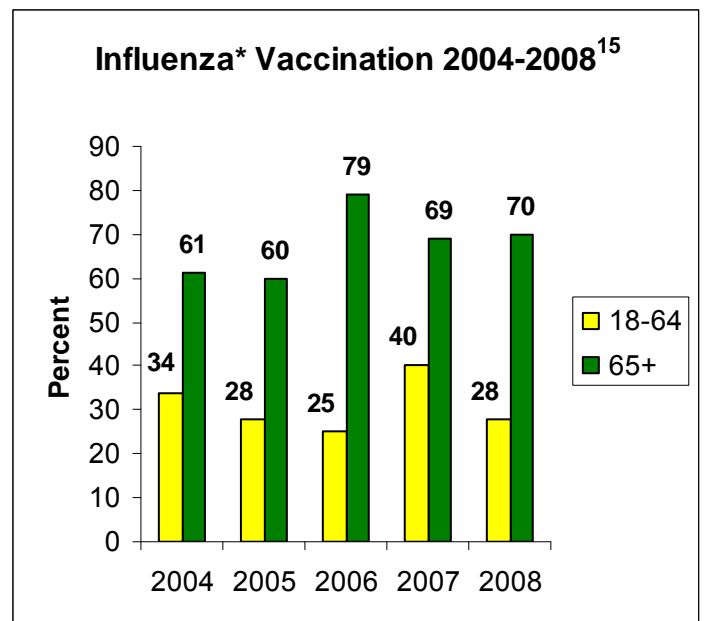




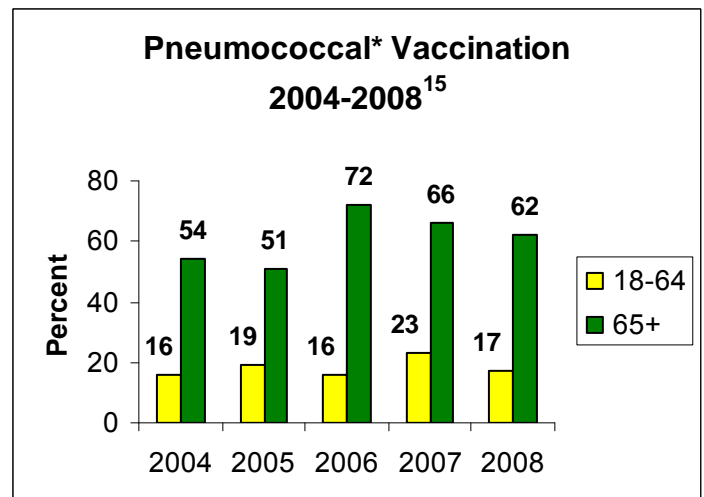
Central Child and Adult Immunization

Adequately Immunized by School District 2008 <sup>6</sup>																
Central	Juab		Millard		N Sanpete		Piute		Sevier		S Sanpete		Tintic		Wayne	
	Adeq Imm	Total Exmp	Adeq Imm	Total Exmp	Adeq Imm	Total Exmp	Adeq Imm	Total Exmp	Adeq Imm	Total Exmp	Adeq Imm	Total Exmp	Adeq Imm	Total Exmp	Adeq Imm	Total Exmp
Kindergarten School Entry	68.0%	7.9%	86.3%	4.3%	78.1%	4.9%	80.8%	0%	75.9%	6.1%	80.0%	4.6%	100%	0%	95.6%	4.4%
Second-Dose Measles (K-12)	93.0%	6.1%	96.9%	3.1%	95.1%	4.6%	100%	0%	94.5%	5.4%	95.8%	3.4%	98.2%	1.8%	98.9%	1.1%
7th Grade Entry	89.6%	3.8%	95.8%	4.2%	97.5%	2.5%	100%	0%	94.2%	4.9%	95.2%	3.4%	94.7%	5.3%	97.4%	2.6%

Child and School Health 2008		
Group	Clinics/Facilities	Enrollment
WIC Women <sup>11</sup>	10	552
WIC Infants <sup>11</sup>	10	531
WIC Children <sup>11</sup>	10	1,180
Child Care <sup>12</sup>	17	740
Head Start <sup>13</sup>	6	227
Public Schools <sup>14</sup>	57	15,909
Private/Charter Schools <sup>14</sup>	9	952



Immunized for Child Care 2008 <sup>6</sup>		
Central	Adequately Immunized	Total Exemptions
Child Care Facilities and Preschools	74.6%	5.3%
Head Start Centers	83.7%	1.3%



\*Influenza=within past 12 months, pneumococcal=ever had