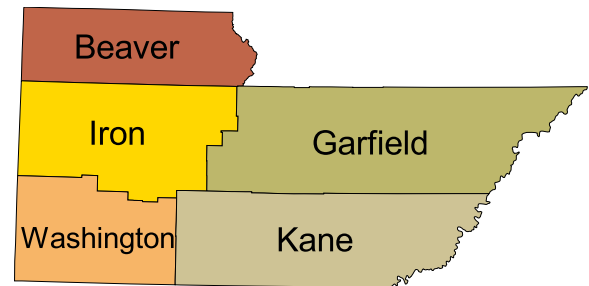
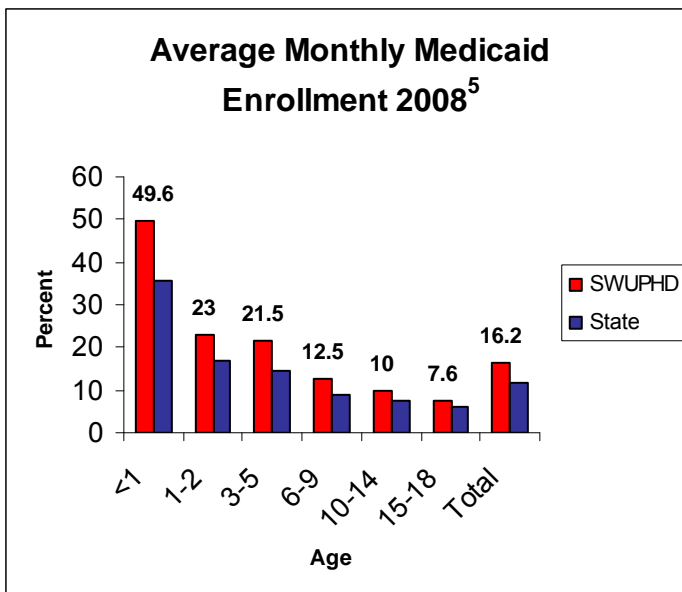


Population 2008 <sup>1</sup>	Number	% of Total
<b>Total Population</b>	<b>215,140</b>	
17 and Under	60,106	27.9%
18 to 34	57,350	26.7%
35 to 49	34,572	16.1%
50 to 64	30,173	14.0%
65 and Over	32,939	15.3%
Poverty 2007-2008 <sup>2</sup>	Estimated	% of Total
<b>Total 0-100% Poverty</b>	<b>21,900</b>	<b>10.2%</b>
17 and Under	7,200	12.0%
18 to 34	7,200	12.5%
35 to 49	3,100	9.0%
50 to 64	2,400	7.9%
65 and Over	1,500	4.7%
<b>Total 101-200% Poverty</b>	<b>65,600</b>	<b>30.5%</b>
17 and Under	23,400	39.0%
18 to 34	20,100	35.1%
35 to 49	11,500	33.3%
50 to 64	4,600	15.3%
65 and Over	5,500	16.7%



Population 2008 <sup>1</sup>	Number	% of Total
<b>Total 0-18</b>	<b>63,854</b>	
<1	4,098	6.4%
1-2	8,035	12.6%
3-5	10,806	16.9%
6-9	13,267	20.8%
10-14	14,845	23.2%
15-18	12,803	20.1%

Population 2008 <sup>1</sup>	Number	% of Total
Beaver	6,520	3.0%
Garfield	4,967	2.3%
Iron	46,992	21.8%
Kane	6,582	3.1%
Washington	150,079	69.8%



Uninsured 2007-2008 <sup>3</sup>	Estimated #	% of Total
<b>Total Uninsured (0-64)</b>	<b>34,300</b>	<b>18.8%</b>
17 and Under	9,000	15.0%
18 to 34	18,200	31.7%
35 to 49	5,500	16.0%
50 to 64	1,700	5.7%

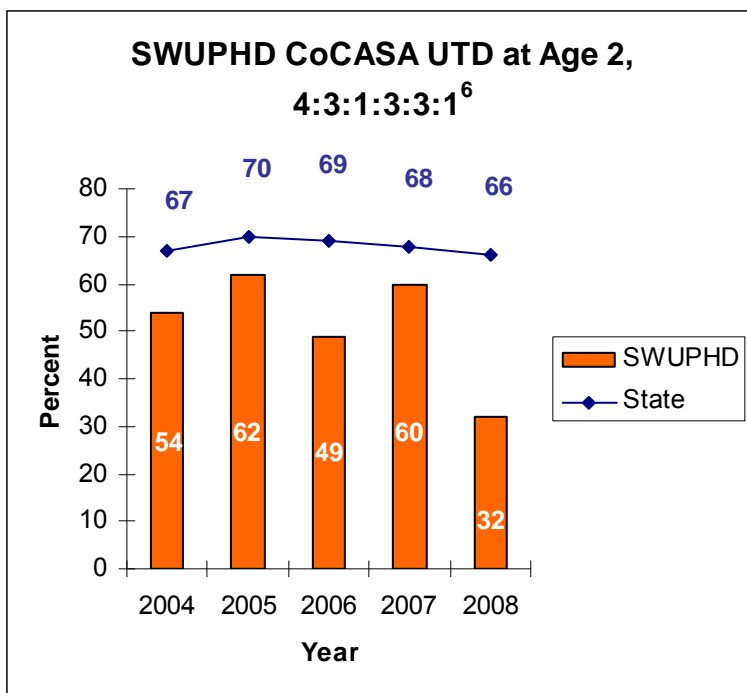
Selected Insurance Type 2008 <sup>4</sup>	Number	% of Total
Medicare	35,400	18.3%
CHIP*	6,400	11.4%

\*Children's Health Insurance Program, Ages 0 to 18

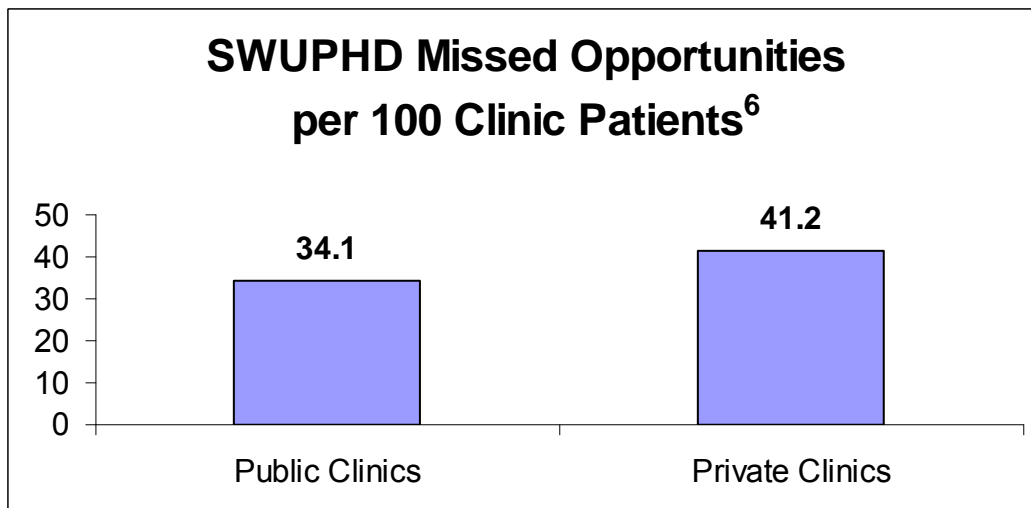
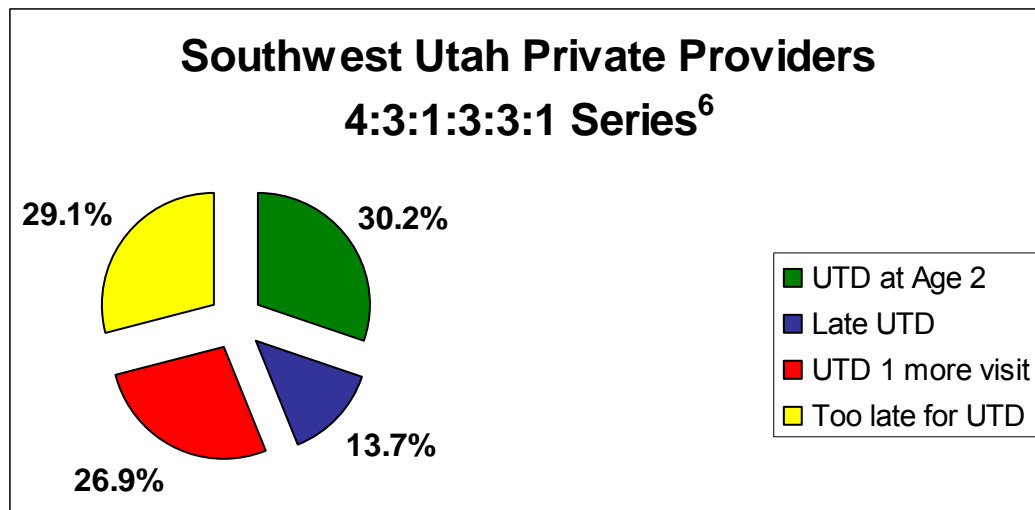
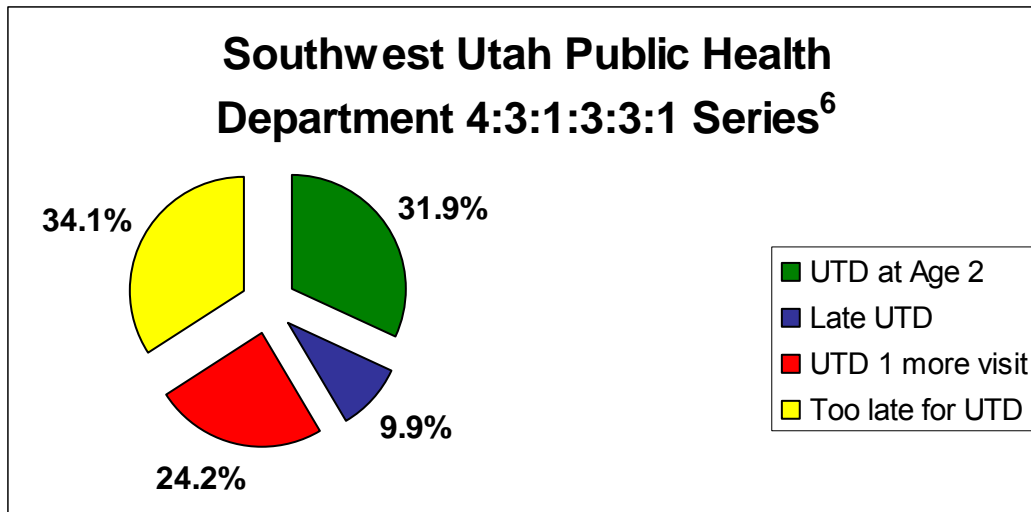
CoCASA: Up-to-Date at Age Two by Antigen 2008 <sup>6</sup>								
	4 DTaP	3 Polio	1 MMR	3 Hib	3 Hep B	1 Varicella	4:3:1:3:3:1	95% Confidence Interval
All Providers	41.0%	65.8%	64.3%	66.4%	66.1%	57.2%	30.4%	25.4%, 35.4%

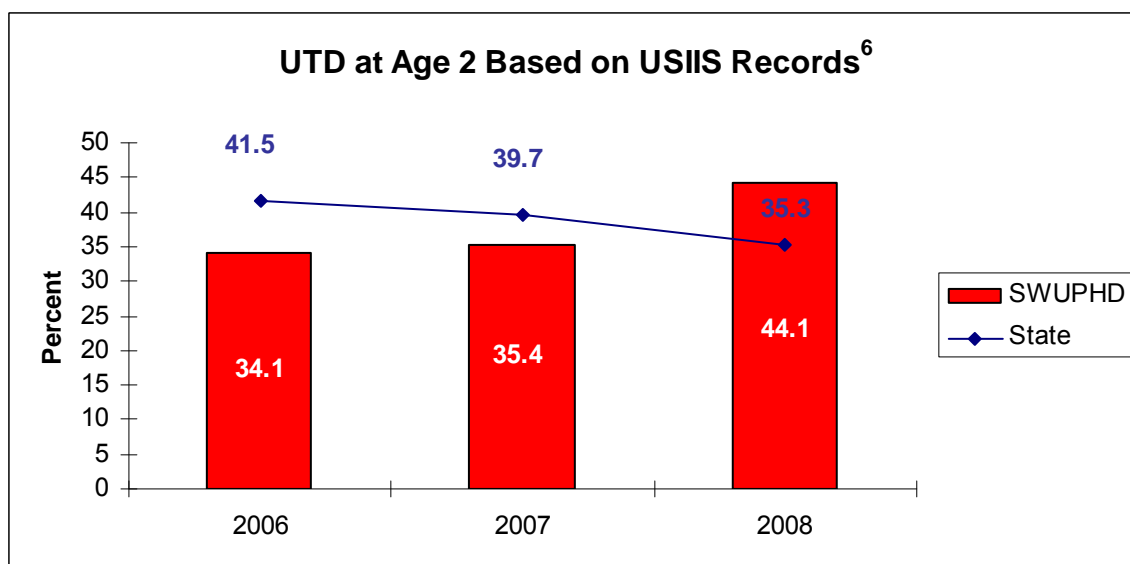
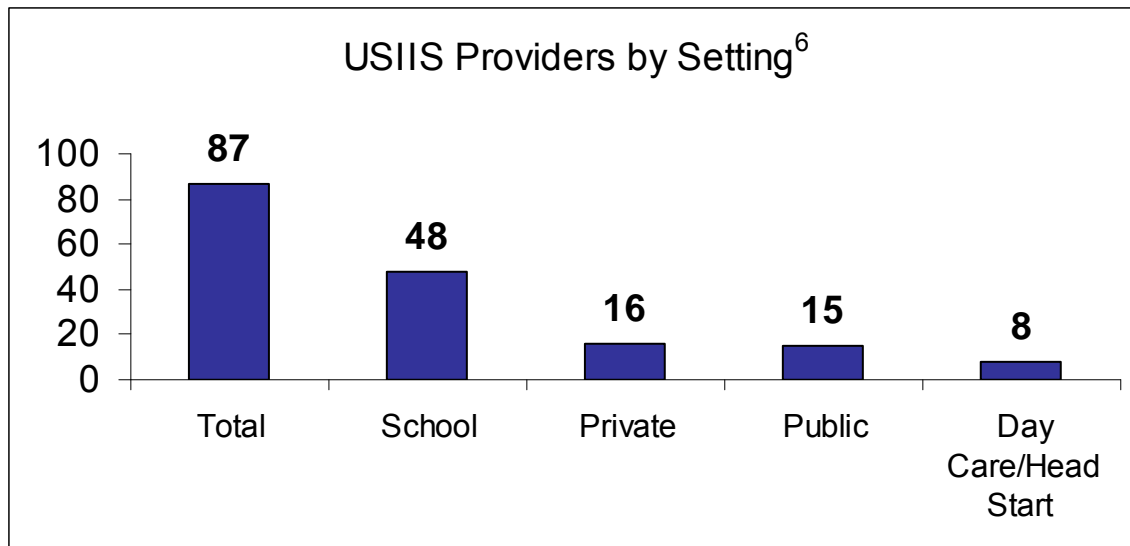
Up-to-Date at Age Two (4:3:1:3:3:1) <sup>6</sup> 2008			
	2008		2007
Provider Type	Point Estimate	95% Confidence Interval	95% Confidence Interval
All VFC Private Providers	30.2%	23.2%, 37.2%	39.5%, 46.3%
FQHC/RHC	28.8%	17.1%, 40.5%	16.9%, 34.1%
Local Health Departments	31.9%	21.8%, 42.0%	51.3%, 67.9%

Health Care 2008	
Providers/Facilities	Number
Private VFC Providers <sup>6</sup>	18
Public Medical Clinics <sup>6</sup>	12
Hospitals <sup>7,*</sup>	7
Long-term Care and Assisted Living Centers <sup>8</sup>	35
Local Health District Offices <sup>6</sup>	5



\*Kane County Hospital & Milford Valley Hospital NOT offering birth dose Hepatitis B vaccine.



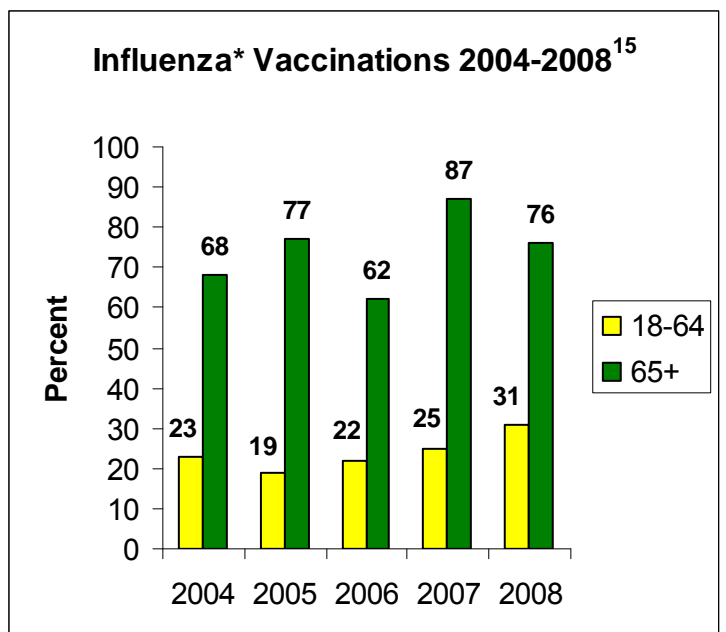


**Adequately Immunized by School District 2008<sup>6</sup>**

Southwest	Beaver		Garfield		Iron		Kane		Washington	
	Adequate Immune	Total Exempt	Adequate Immune	Total Exempt	Adequate Immune	Total Exempt	Adequate Immune	Total Exempt	Adequate Immune	Total Exempt
Kindergarten School Entry	94.7%	1.5%	86.8%	5.9%	84.4%	5.1%	84.0%	8.5%	85.5%	4.0%
Second-Dose Measles (K-12)	99.0%	1.0%	96.9%	2.7%	95.1%	4.6%	94.4%	5.0%	96.3%	3.1%
7th Grade Entry	96.8%	3.3%	93.4%	6.6%	92.8%	5.3%	86.3%	5.3%	96.1%	3.5%

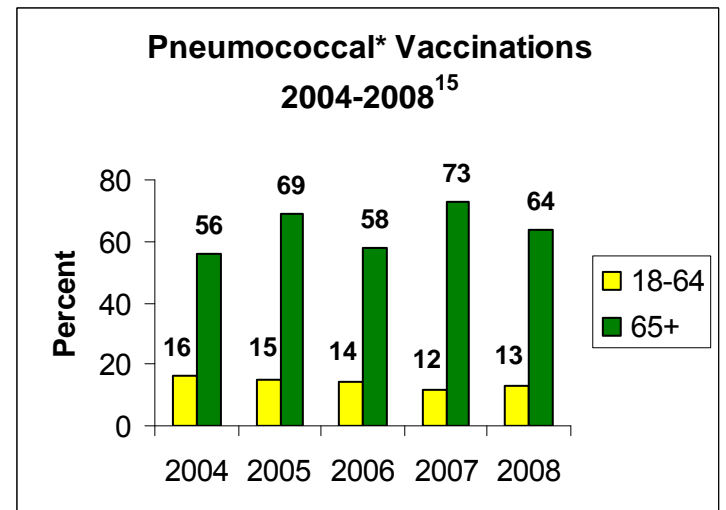
**Child and School Health 2008**

Group	Clinics/ Facilities	Enrollment
WIC Women <sup>11</sup>	5	1,499
WIC Infants <sup>11</sup>	5	1,423
WIC Children <sup>11</sup>	5	2,747
Child Care <sup>12</sup>	13	1,027
Head Start <sup>13</sup>	1	408
Public Schools <sup>14</sup>	87	37,809
Private/Charter Schools <sup>14</sup>	15	2,378



**Immunized for Child Care 2008<sup>6</sup>**

Southwest	Adequately Immunized	Total Exemptions
Child Care Facilities and Preschools	61.4%	6.6%
Head Start Centers	66.4%	2.9%



\*Influenza=within past 12 months, pneumococcal=ever had