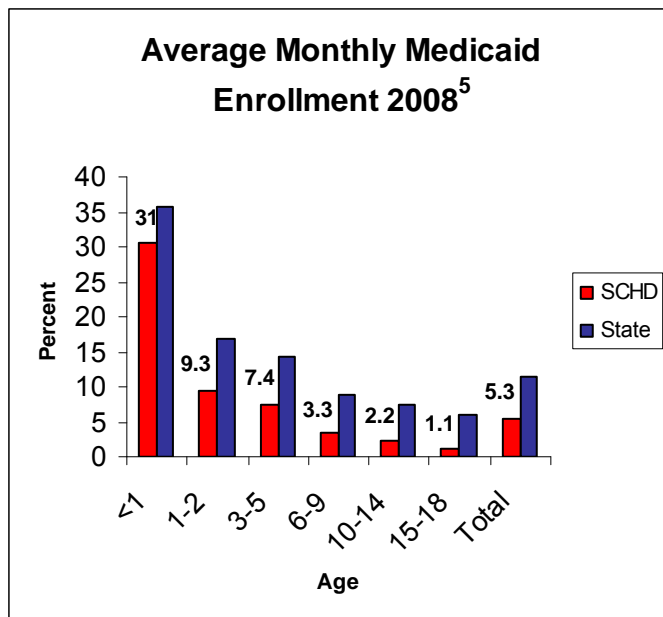


Population 2008 ¹	Number	% of Total
Total Population	39,615	
17 and Under	10,075	25.4%
18 to 34	9,816	24.8%
35 to 49	8,925	22.5%
50 to 64	8,027	20.3%
65 and Over	2,772	7.0%
Poverty 2007-2008 ²	Estimated	% of Total
Total 0-100% Poverty	2,600	6.5%
17 and Under	900	9.4%
18 to 34	1,000	10.0%
35 to 49	500	6.0%
50 to 64	**	**
65 and Over	**	**
Total 101-200% Poverty	3,800	9.6%
17 and Under	1,100	10.8%
18 to 34	1,200	11.9%
35 to 49	600	6.8%
50 to 64	500	5.7%
65 and Over	500	17.0%



Population 2008 ¹	Number	% of Total
Total 0-18	10,725	
<1	574	5.4%
1-2	1,127	10.5%
3-5	1,741	16.2%
6-9	2,166	20.2%
10-14	2,695	25.1%
15-18	2,422	22.6%



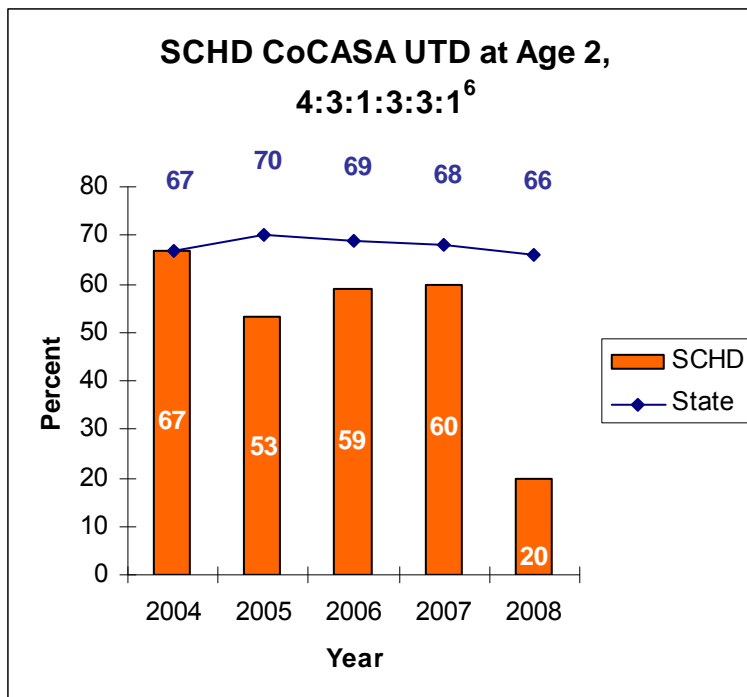
Uninsured 2007-2008 ³	Estimated #	% of Total
Total Uninsured (0-64)	3,800	10.2%
17 and Under	600	6.2%
18 to 34	2,200	22.5%
35 to 49	600	6.9%
50 to 64	200	2.9%
Selected Insurance Type 2008 ⁴	Number	% of Total
Medicare	3,600	10.2%
CHIP*	**	**

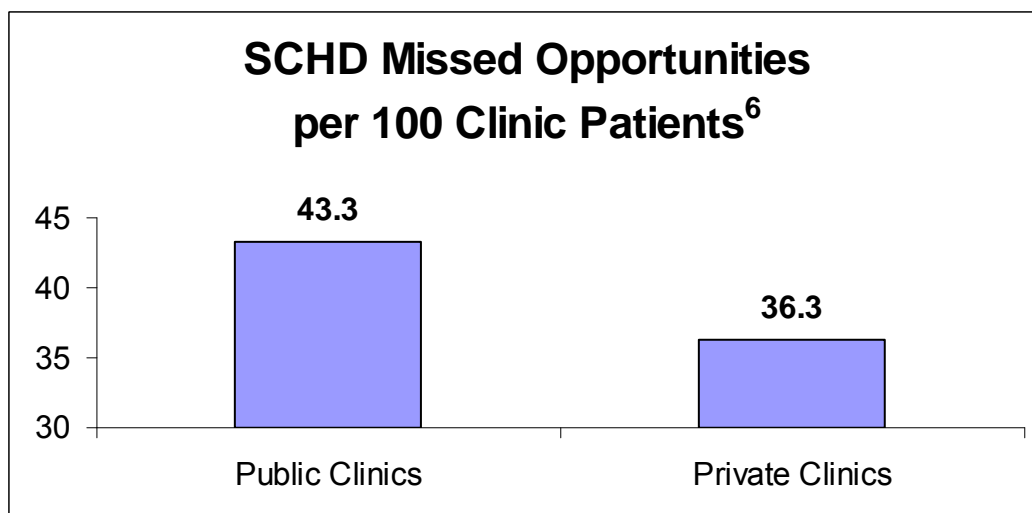
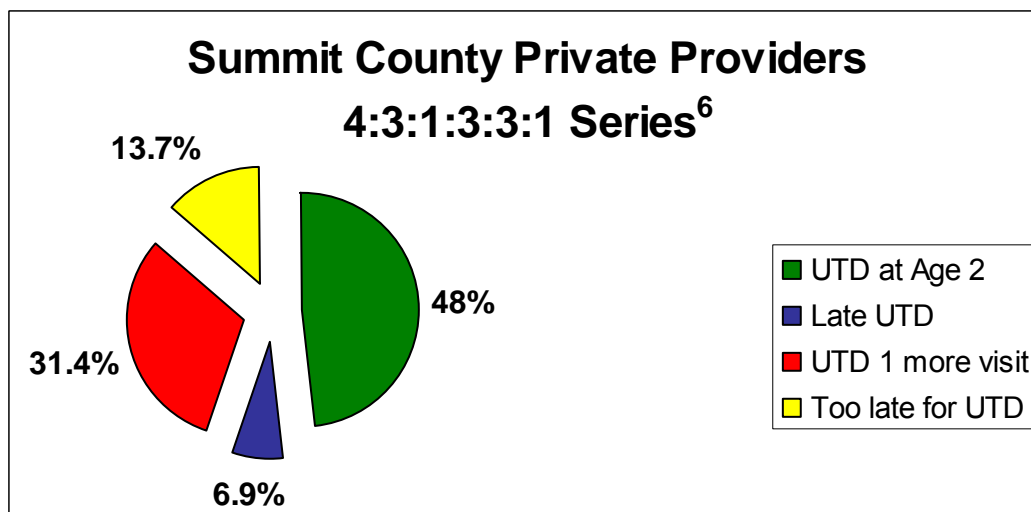
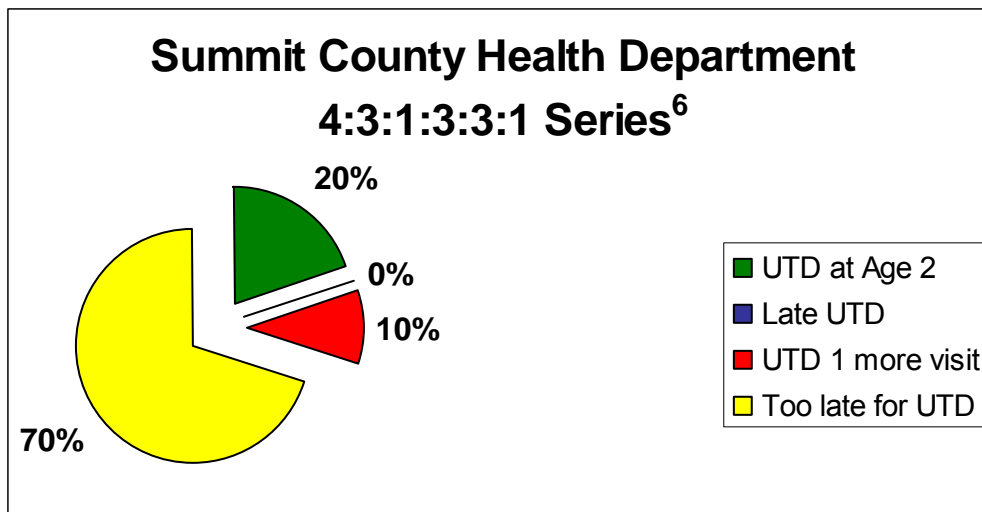
*Children's Health Insurance Program, Ages 0 to 18

CoCASA: Up-to-Date at Age Two by Antigen 2008 ⁶								
	4 DTaP	3 Polio	1 MMR	3 Hib	3 Hep B	1 Varicella	4:3:1:3:3:1	95% Confidence Interval
All Providers	59.1%	70.5%	77.3%	73.5%	53.8%	76.5%	41.7%	32.9%, 50.5%

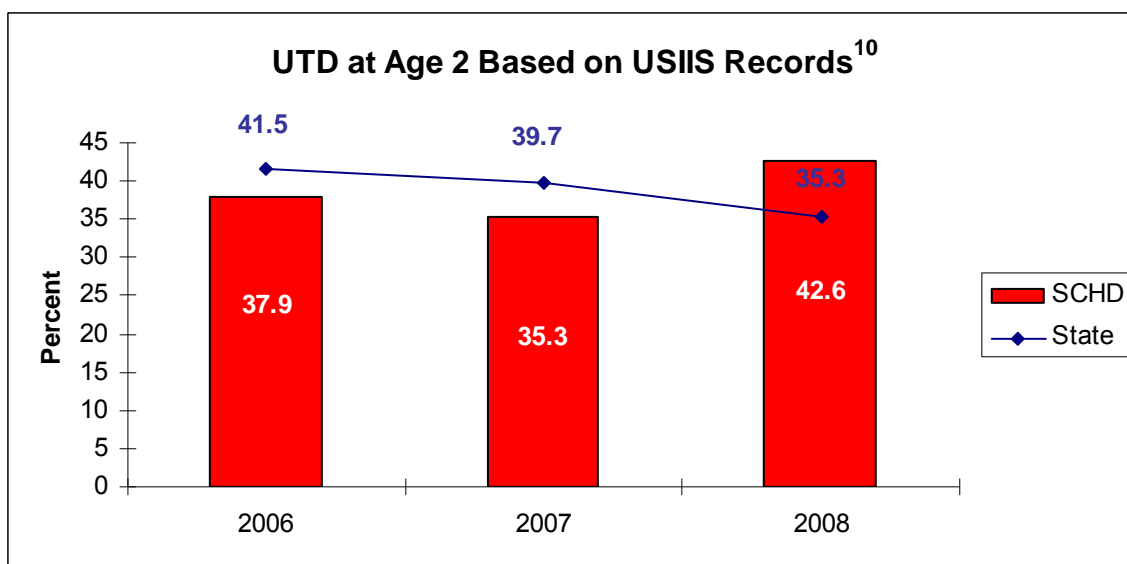
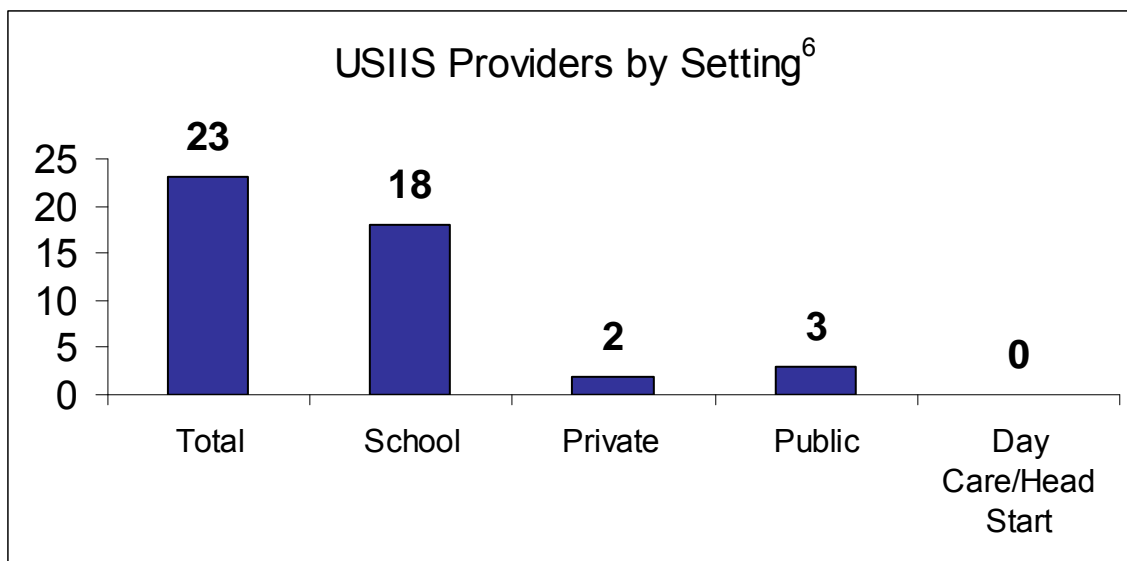
Up-to-Date at Age Two (4:3:1:3:3:1) ⁶ 2008			
	2008		2007
Provider Type	Point Estimate	95% Confidence Interval	95% Confidence Interval
All VFC Private Providers	48.0%	37.8%, 58.2%	35.9%, 54.8%
FQHC/RHC	NA	NA	NA
Local Health Departments	20.0%	9.5%, 37.3%	38.8%, 81.2%

Health Care 2008	
Providers/Facilities	Number
Private VFC Providers ⁶	4
Public Medical Clinics ⁶	2
Hospitals ⁷	0
Long-term Care and Assisted Living Centers ⁸	1
Local Health District Offices ⁶	3





Summit County Early Childhood Immunization



Adequately Immunized by School District 2008⁶

Summit	North Summit		Park City		South Summit	
	Adequately Immunized	Total Exemptions	Adequately Immunized	Total Exemptions	Adequately Immunized	Total Exemptions
Kindergarten School Entry	88.6%	5.1%	91.0%	3.1%	89.6%	4.7%
Second-Dose Measles (K-12)	98.3%	1.7%	96.0%	4.0%	97.9%	2.1%
7th Grade Entry	100%	0%	98.9%	0.8%	93.9%	6.1%

Child and School Health 2008

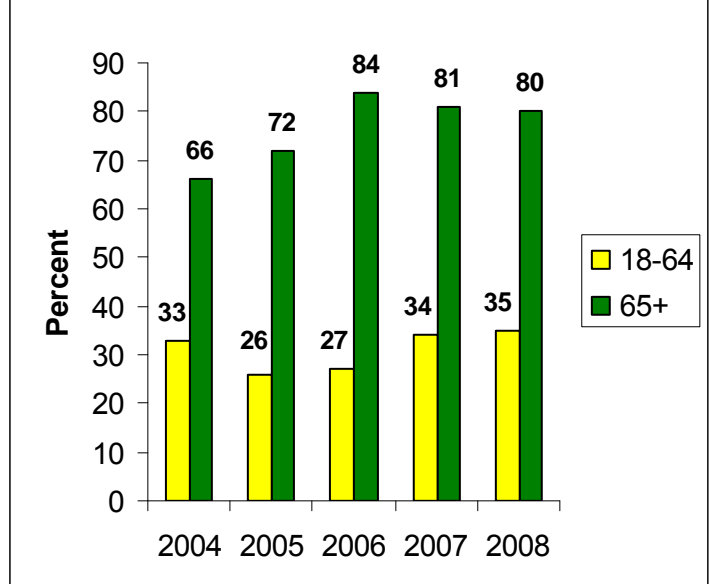
Group	Clinics/Facilities	Enrollment
WIC Women ¹¹	2	168
WIC Infants ¹¹	2	154
WIC Children ¹¹	2	295
Child Care ¹²	5	270
Head Start ¹³	+	+
Public Schools ¹⁴	18	6,892
Private/Charter Schools ¹⁴	5	419

*Data for Summit County Head Start are included in DCHD.

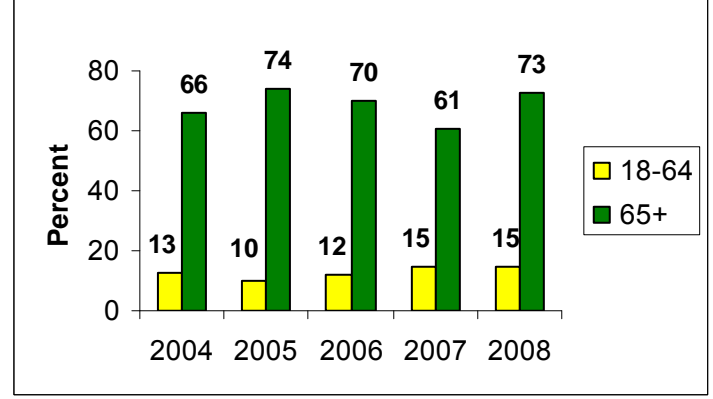
Immunized for Child Care 2008⁶

Summit	Adequately Immunized	Total Exemptions
Child Care Facilities and Preschools	91.1%	5.2%
Head Start Centers	Reported in Davis HS	Reported in Davis HS

Influenza* Vaccinations 2004-2008¹⁵



Pneumococcal* Vaccination 2004-2008¹⁵



*Influenza=within past 12 months, pneumococcal=ever had