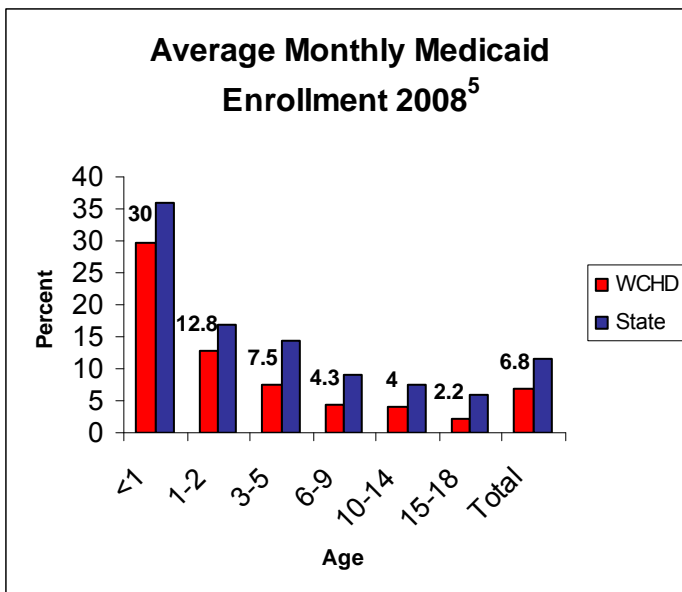


Population 2008 ¹	Number	% of Total
Total Population	22,956	
17 and Under	6,901	30.1%
18 to 34	6,231	27.1%
35 to 49	4,582	20.0%
50 to 64	3,466	15.1%
65 and Over	1,776	7.7%

Poverty 2007-2008 ²	Estimated	% of Total
Total 0-100% Poverty	2,500	10.7%
17 and Under	900	12.4%
18 to 34	1,000	15.5%
35 to 49	300	7.2%
50 to 64	200	5.8%
65 and Over	100	3.1%
Total 101-200% Poverty	4,100	17.7%
17 and Under	1,600	23.2%
18 to 34	1,300	20.3%
35 to 49	700	14.8%
50 to 64	300	8.2%
65 and Over	200	9.3%



Population 2008 ¹	Number	% of Total
Total 0-18	7,282	
<1	419	5.8%
1-2	794	10.9%
3-5	1,274	17.5%
6-9	1,519	20.9%
10-14	1,766	24.3%
15-18	1,510	20.7%



Uninsured 2007-2008 ³	Estimated #	% of Total
Total Uninsured (0-64)	2,700	12.8%
17 and Under	700	9.7%
18 to 34	1,200	19.8%
35 to 49	500	10.8%
50 to 64	300	8.1%

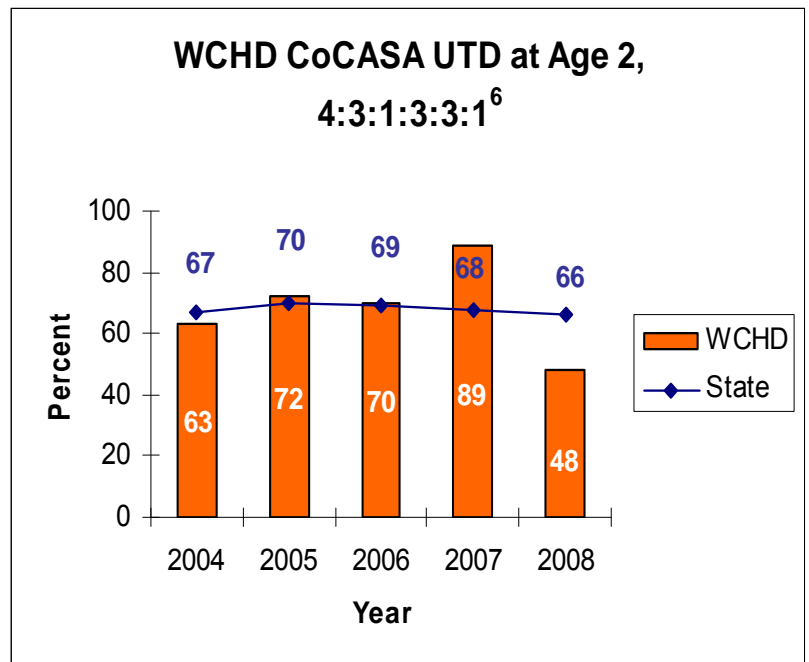
Selected Insurance Type 2008 ⁴	Number	% of Total
Medicare	2,400	11.9%
CHIP*	100	2.3%

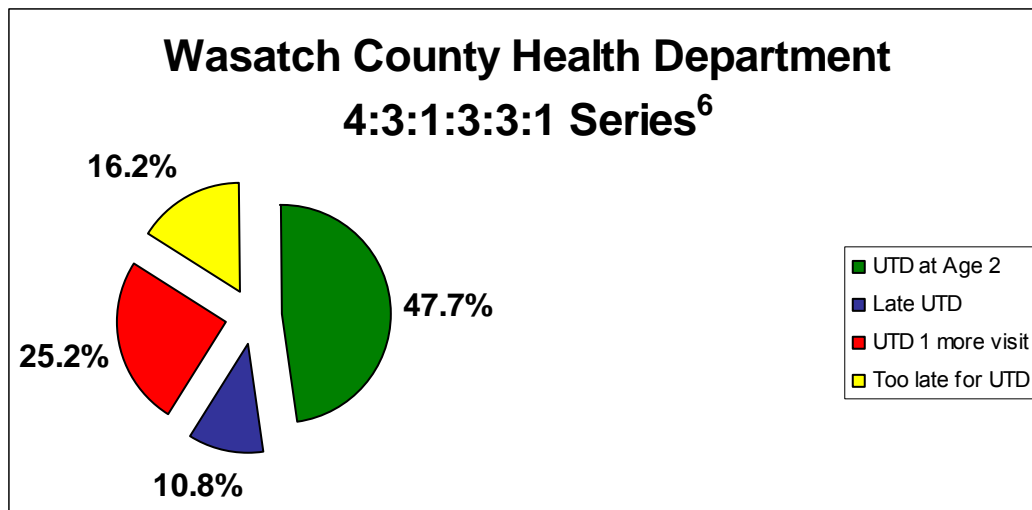
*Children's Health Insurance Program, Ages 0 to 18

CoCASA: Up-to-Date at Age Two by Antigen 2008 ⁶							
	4 DTaP	3 Polio	1 MMR	3 Hib	3 Hep B	1 Varicella	4:3:1:3:3:1 95% Confidence Interval
All Providers	54.1%	78.4%	72.1%	69.4%	79.3%	72.1%	47.7% 37.9%, 57.5%

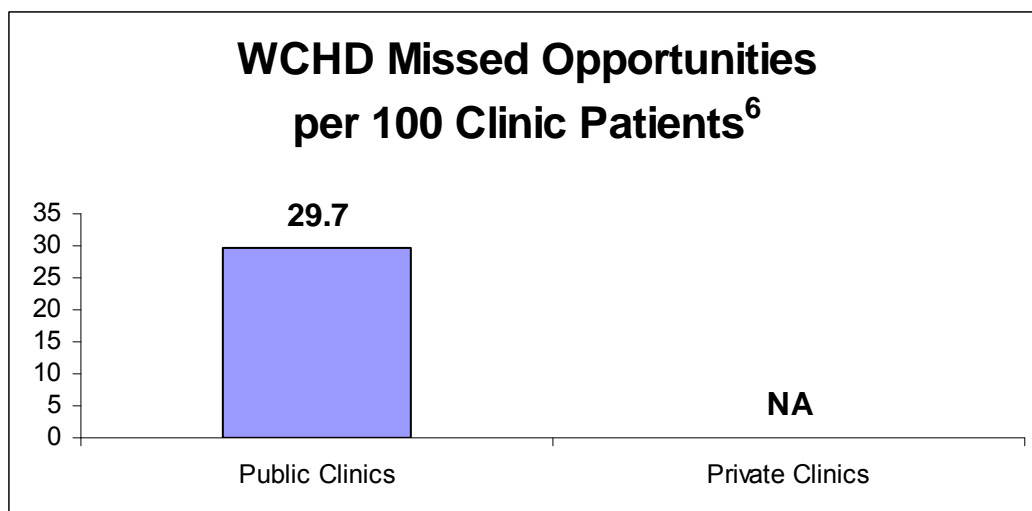
Up-to-Date at Age Two (4:3:1:3:3:1) ⁶ 2008			
	2008		2007
Provider Type	Point Estimate	95% Confidence Interval	95% Confidence Interval
All VFC Private Providers	NA	NA	59.6%, 77.1%
FQHC/RHC	NA	NA	NA
Local Health Departments	47.7%	37.9%, 57.5%	72.0%, 96.1%

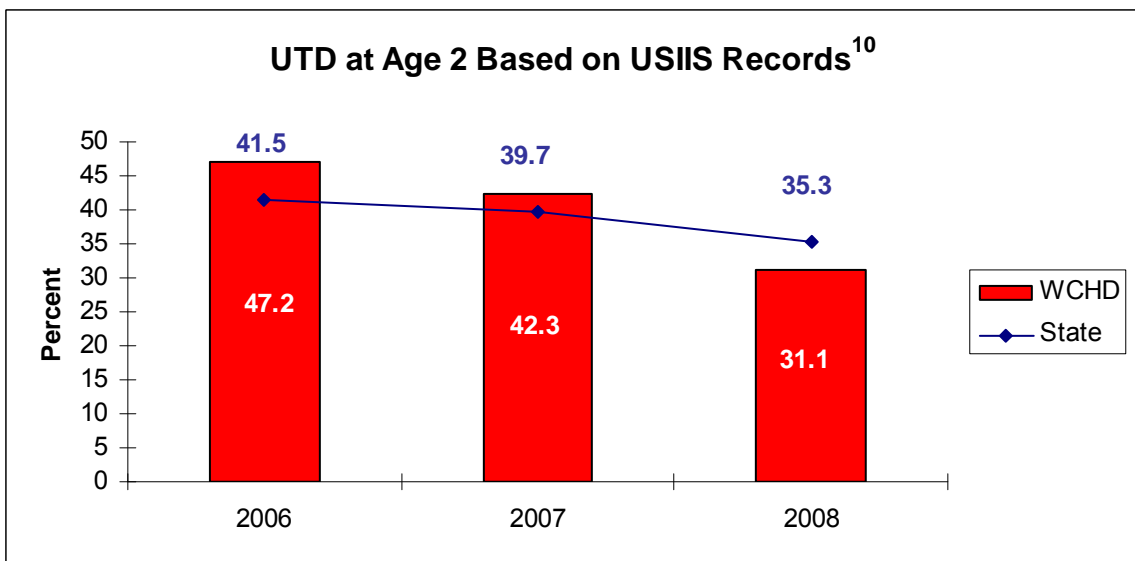
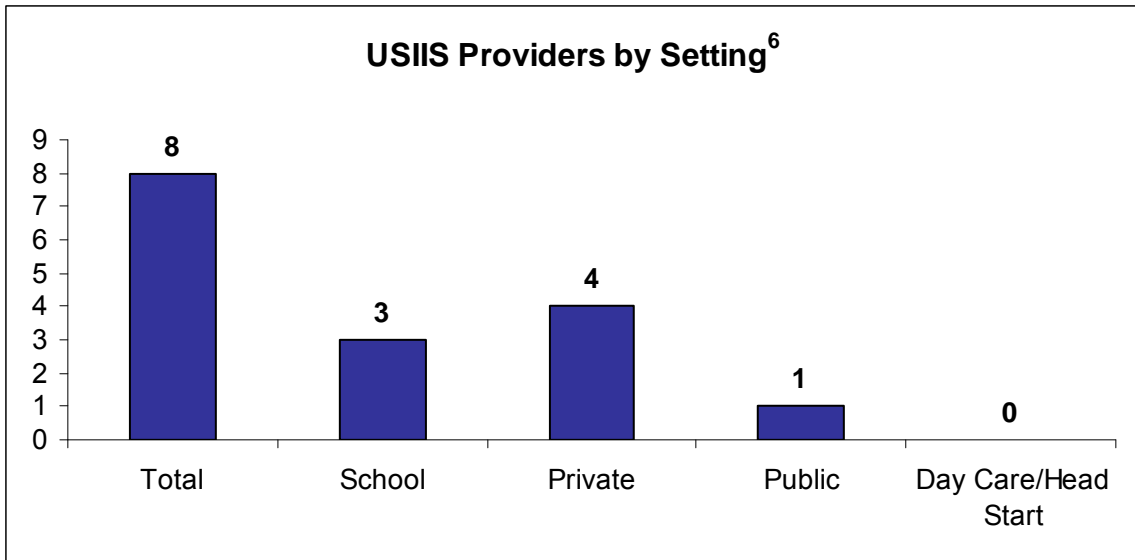
Health Care 2008	
Providers/Facilities	Number
Private VFC Providers ⁶	3
Public Medical Clinics ⁶	0
Hospitals ⁷	1
Long-term Care and Assisted Living Centers ⁸	2
Local Health District Offices ⁶	1





No private clinics assessed.

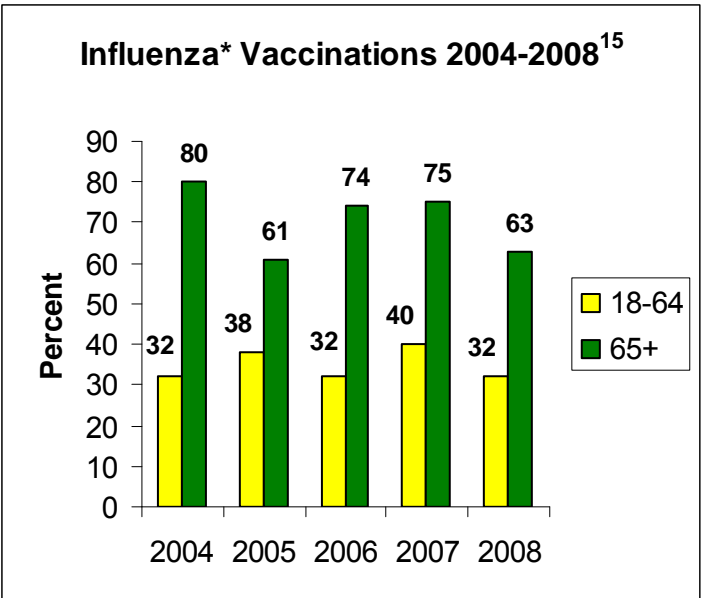




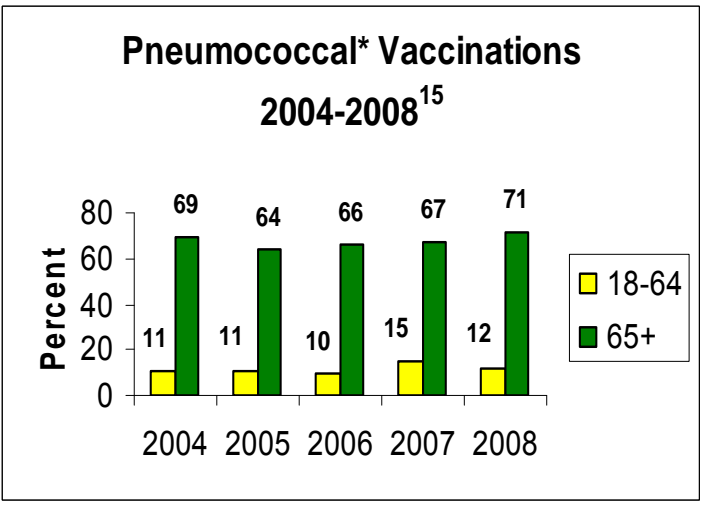
Adequately Immunized by School District 2008 ⁶		
Wasatch	Wasatch	
	Adequately Immunized	Total Exemptions
Kindergarten School Entry	77.2%	4.6%
Second-Dose Measles (K-12)	96.6%	2.8%
7th Grade Entry	95.5%	4.5%

Child and School Health 2008		
Group	Clinics/ Facilities	Enrollment
WIC Women ¹¹	1	133
WIC Infants ¹¹	1	132
WIC Children ¹¹	1	208
Child Care ¹²	5	165
Head Start ^{+, 13}	+	+
Public Schools ¹⁴	8	4,745
Private/Charter Schools ¹⁴	1	144

*Data for Wasatch Head Start reported with Utah County.



Immunized for Child Care 2008 ⁶		
Wasatch	Adequately Immunized	Total Exemptions
Child Care Facilities and Preschools	57.6%	2.4%
Head Start Centers ⁺	Reported in Utah Co HS	Reported in Utah Co HS



* Head Start data for WCHD are included in UCHD.

*Influenza=within past 12 months, pneumococcal=ever had